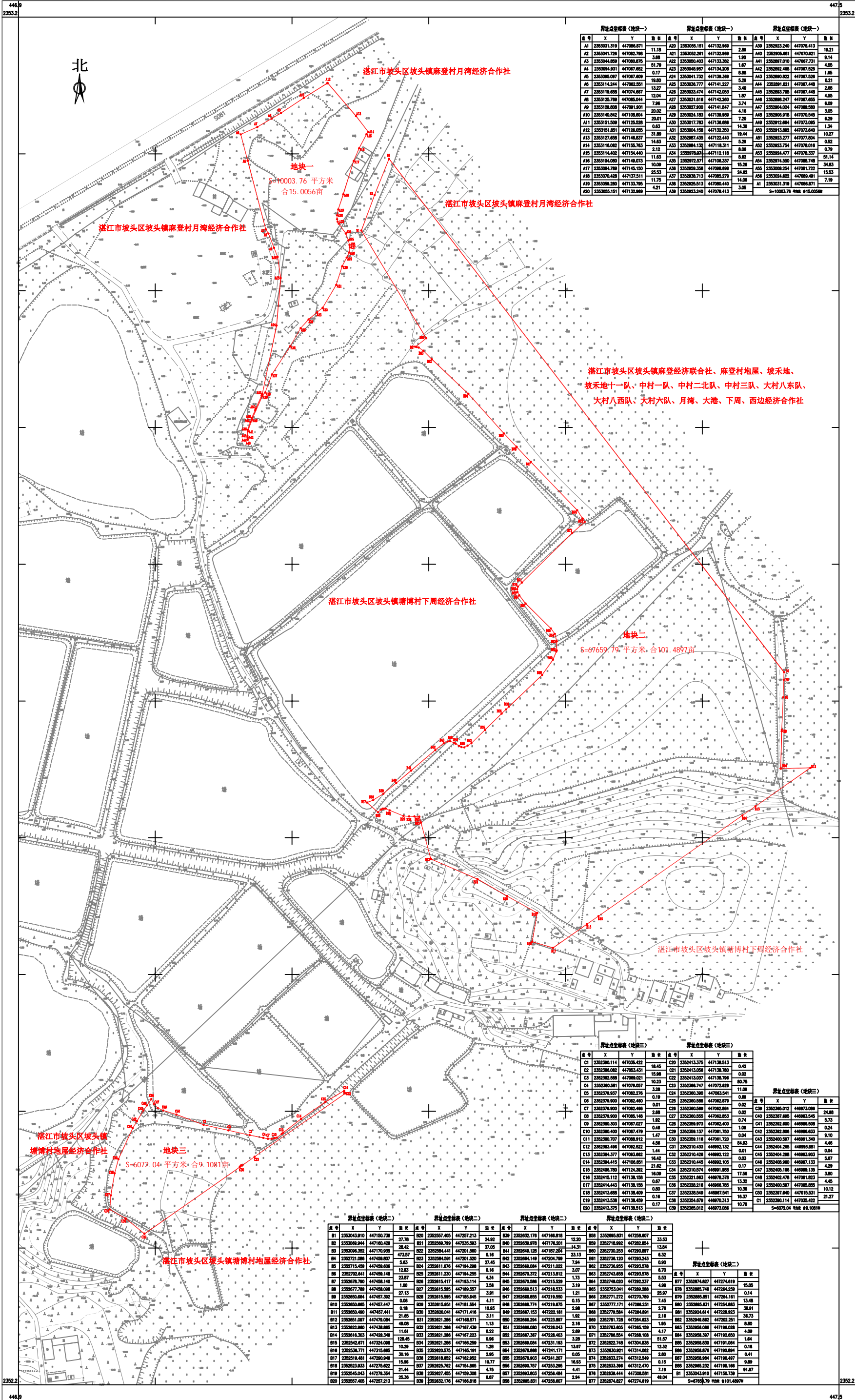


湛江市2013年度第四十三批次城市建设用地农用地转用和土地征收实施方案勘测定界图
2352_2-446_9



界址点坐标表 (地块一)			界址点坐标表 (地块一)			界址点坐标表 (地块一)		
点号	X	Y	点号	X	Y	点号	X	Y
A1	235301.319	447086.871	A20	235305.151	447132.989	A39	235293.240	447078.413
A2	235304.178	447082.788	A21	235302.281	447132.989	A40	235293.240	447078.413
A3	235304.459	447080.875	A22	235305.403	447133.382	A41	235297.010	447067.731
A4	235304.831	447087.882	A23	235304.807	447134.208	A42	235292.488	447067.525
A5	235305.087	447087.889	A24	235304.732	447138.389	A43	235298.822	447067.528
A6	235314.244	447082.551	A25	235303.777	447141.227	A44	235289.021	447067.448
A7	235318.658	447074.887	A26	235303.474	447142.053	A45	235283.705	447067.448
A8	235315.789	447085.044	A27	235303.816	447142.280	A46	235288.247	447067.855
A9	235318.808	447081.801	A28	235302.800	447141.847	A47	235284.024	447067.580
A10	235314.842	447108.804	A29	235302.183	447138.889	A48	235290.818	447070.545
A11	235315.508	447125.538	A30	235301.783	447138.888	A49	235291.884	447073.085
A12	235315.851	447126.055	A31	235304.198	447132.355	A50	235291.885	447073.640
A13	235312.888	447146.837	A32	235298.745	447122.440	A51	235292.577	447077.854
A14	235314.882	447155.783	A33	235298.132	447118.311	A52	235292.794	447078.018
A15	235314.402	447154.440	A34	235297.823	447112.118	A53	235292.477	447078.337
A16	235304.080	447148.273	A35	235297.571	447108.337	A54	235297.550	447088.748
A17	235304.789	447145.150	A36	235298.388	447088.889	A55	235300.254	447081.722
A18	235307.428	447137.511	A37	235298.715	447085.279	A56	235302.482	447088.481
A19	235308.280	447133.795	A38	235292.513	447080.440	A1	235303.318	447088.871
A20	235305.151	447132.989	A39	235293.240	447078.413			

界址点坐标表 (地块三)			界址点坐标表 (地块三)			界址点坐标表 (地块三)		
点号	X	Y	点号	X	Y	点号	X	Y
C1	235290.114	447026.432	C20	235294.370	447138.513	C39	235293.011	448973.088
C2	235296.482	447033.431	C21	235294.356	447138.780	C40	235297.895	448983.508
C3	235292.588	447049.021	C22	235294.037	447138.789	C41	235292.806	448988.833
C4	235290.581	447078.087	C23	235293.747	447072.828	C42	235292.806	448988.833
C5	235297.837	447082.276	C24	235293.380	447063.541	C43	235290.587	448991.340
C6	235297.900	447082.480	C25	235293.088	447062.879	C44	235294.285	448993.881
C7	235297.900	447082.480	C26	235293.088	447062.884	C45	235294.285	448993.881
C8	235297.900	447082.480	C27	235293.088	447062.883	C46	235294.285	448993.881
C9	235296.303	447087.027	C28	235293.873	447062.400	C47	235294.285	448993.881
C10	235290.400	447087.479	C29	235293.137	447061.750	C48	235294.285	448993.881
C11	235290.707	447088.912	C30	235293.116	447061.720	C49	235294.285	448993.881
C12	235293.488	447082.822	C31	235293.433	448992.132	C50	235294.285	448993.881
C13	235294.377	447083.882	C32	235293.408	448992.122	C51	235294.285	448993.881
C14	235294.418	447084.881	C33	235293.405	448992.105	C52	235294.285	448993.881
C15	235294.418	447084.881	C34	235293.405	448992.105	C53	235294.285	448993.881
C16	235294.418	447084.881	C35	235293.405	448992.105	C54	235294.285	448993.881
C17	235294.418	447084.881	C36	235293.405	448992.105	C55	235294.285	448993.881
C18	235294.418	447084.881	C37	235293.405	448992.105	C56	235294.285	448993.881
C19	235294.418	447084.881	C38	235293.405	448992.105	C57	235294.285	448993.881
C20	235294.370	447138.513	C39	235293.011	448973.088	C58	235294.285	448993.881

界址点坐标表 (地块二)			界址点坐标表 (地块二)			界址点坐标表 (地块二)		
点号	X	Y	点号	X	Y	点号	X	Y
B1	235294.810	447150.738	B20	235297.405	447257.213	B39	235293.178	447186.818
B2	235298.844	447160.428	B21	235298.789	447235.583	B40	235293.078	447178.201
B3	235298.382	447170.935	B22	235298.441	447201.580	B41	235294.128	447187.204
B4	235271.088	447408.807	B23	235298.581	447201.520	B42	235294.128	447187.204
B5	235275.458	447408.806	B24	235281.078	447184.298	B43	235298.084	447211.022
B6	235272.841	447408.148	B25	235281.330	447184.295	B44	235270.372	447213.812
B7	235276.780	447408.140	B26	235281.517	447183.114	B45	235270.386	447215.529
B8	235277.788	447408.098	B27	235281.585	447180.557	B46	235269.513	447218.533
B9	235269.884	447457.382	B28	235281.585	447180.557	B47	235269.885	447218.530
B10	235269.885	447457.382	B29	235281.585	447180.557	B48	235269.885	447218.530
B11	235269.885	447457.382	B30	235281.585	447180.557	B49	235269.885	447218.530
B12	235269.885	447457.382	B31	235281.585	447180.557	B50	235269.885	447218.530
B13	235269.885	447457.382	B32	235281.585	447180.557	B51	235269.885	447218.530
B14	235269.885	447457.382	B33	235281.585	447180.557	B52	235269.885	447218.530
B15	235269.885	447457.382	B34	235281.585	447180.557	B53	235269.885	447218.530
B16	235269.885	447457.382	B35	235281.585	447180.557	B54	235269.885	447218.530
B17	235269.885	447457.382	B36	235281.585	447180.557	B55	235269.885	447218.530
B18	235269.885	447457.382	B37	235281.585	447180.557	B56	235269.885	447218.530
B19	235269.885	447457.382	B38	235281.585	447180.557	B57	235269.885	447218.530
B20	235269.885	447457.382	B39	235281.585	447180.557	B58	235269.885	447218.530

界址点坐标表 (地块二)			界址点坐标表 (地块二)			界址点坐标表 (地块二)		
点号	X	Y	点号	X	Y	点号	X	Y
D1	235294.810	447150.738	D20	235297.405	447257.213	D39	235293.178	447186.818
D2	235298.844	447160.428	D21	235298.789	447235.583	D40	235293.078	447178.201
D3	235298.382	447170.935	D22	235298.441	447201.580	D41	235294.128	447187.204
D4	235271.088	447408.807	D23	235298.581	447201.520	D42	235294.128	447187.204
D5	235275.458	447408.806	D24	235281.078	447184.298	D43	235298.084	447211.022
D6	235272.841	447408.148	D25	235281.330	447184.295	D44	235270.372	447213.812
D7	235276.780	447408.140	D26	235281.517	447183.114	D45	235270.386	447215.529
D8	235277.788	447408.098	D27	235281.585	447180.557	D46	235269.513	447218.533
D9	235269.884	447457.382	D28	235281.585	447180.557	D47	235269.885	447218.530
D10	235269.885	447457.382	D29	235281.585	447180.557	D48	235269.885	447218.530
D11	235269.885	447457.382	D30	235281.585	447180.557	D49	235269.885	447218.530
D12	235269.885	447457.382	D31	235281.585	447180.557	D50	235269.885	447218.530
D13	235269.885	447457.382	D32	235281.585	447180.557	D51	235269.885	447218.530
D14	235269.885	447457.382	D33	235281.585	447180.557	D52	235269.885	447218.530
D15	235269.885	447457.382	D34	235281.585	447180.557	D53	235269.885	447218.530
D16	235269.885	447457.382	D35	235281.585	447180.557	D54	235269.885	447218.530
D17	235269.885	447457.382	D36	235281.585	447180.557	D55	235269.885	447218.530
D18	235269.885	447457.382	D37	235281.585	447180.557	D56	235269.885	447218.530
D19	235269.885	447457.382	D38	235281.585	447180.557	D57	235269.885	447218.530
D20	235269.885	447457.382	D39	235281.585	447180.557	D58	235269.885	447218.530

湛江市不动产调查规划测绘院