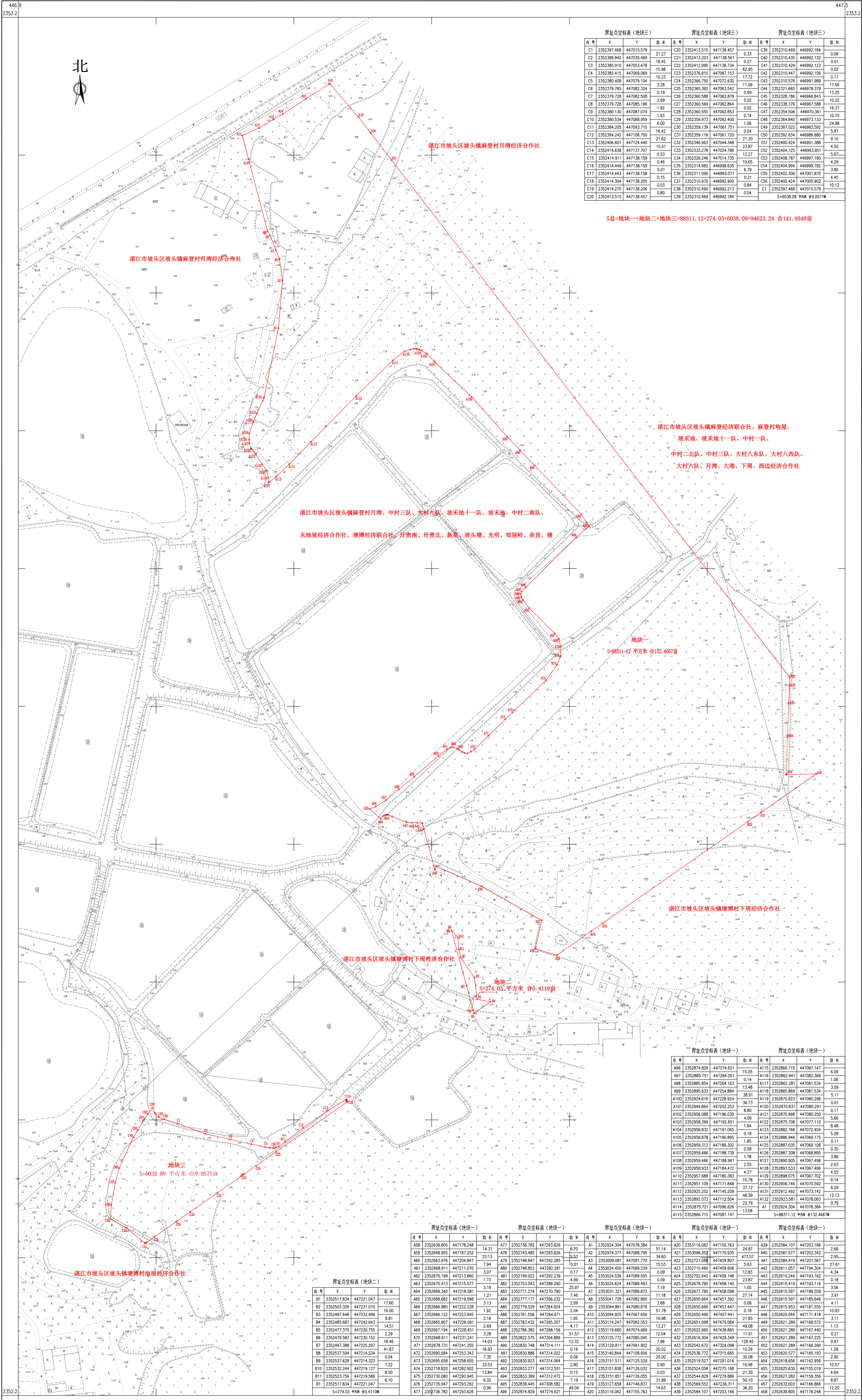
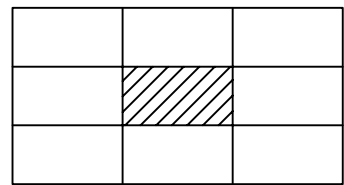


湛江市2013年度第四十三批次城市建设用地农用地转用和土地征收实施方案勘测定界图  
2352.2-446.9



界址点坐标表(地块三)				界址点坐标表(地块三)				界址点坐标表(地块三)			
点号	X	Y	边长	点号	X	Y	边长	点号	X	Y	边长
C1	235237.468	447015.579	21.27	C20	2352413.515	447138.457	0.33	C39	2352310.469	446992.184	0.06
C2	2352389.942	447035.469	18.45	C21	2352413.203	447138.561	0.27	C40	2352310.435	446992.132	0.01
C3	2352385.910	447035.478	15.98	C22	2352412.995	447138.734	62.95	C41	2352310.429	446992.123	0.02
C4	2352382.415	447069.069	10.23	C23	2352376.910	447087.153	17.72	C42	2352310.447	446992.106	0.17
C5	2352380.408	447079.104	3.28	C24	2352366.750	447072.630	11.09	C43	2352310.576	446991.989	13.25
C6	2352379.765	447082.324	0.19	C25	2352360.392	447063.542	0.69	C44	2352321.665	446978.379	10.22
C7	2352379.728	447082.508	2.69	C26	2352360.588	447062.879	0.02	C45	2352328.186	446966.843	16.37
C8	2352379.728	447085.196	1.92	C27	2352360.569	447062.864	0.74	C46	2352338.376	446967.586	10.22
C9	2352380.130	447087.074	6.00	C28	2352360.555	447062.853	0.04	C47	2352354.506	446970.361	10.70
C10	2352380.534	447088.959	1.93	C29	2352359.973	447062.400	1.06	C48	2352364.840	446973.133	24.98
C11	2352384.205	447093.710	16.42	C30	2352359.139	447061.751	0.04	C49	2352387.522	446983.592	9.10
C12	2352394.242	447106.700	21.62	C31	2352359.116	447061.720	23.87	C50	2352392.434	446986.680	5.97
C13	2352406.607	447124.440	15.51	C32	2352346.963	447044.348	12.27	C51	2352400.424	446991.388	4.50
C14	2352414.638	447137.707	0.53	C33	2352333.278	447024.786	19.65	C52	2352404.125	446993.951	5.67
C15	2352414.911	447138.159	0.46	C34	2352326.246	447014.735	6.79	C53	2352408.287	446997.180	4.29
C16	2352414.449	447138.159	0.01	C35	2352314.982	446993.071	0.21	C54	2352404.994	446999.182	3.80
C17	2352414.443	447138.205	0.15	C36	2352311.090	446993.071	0.84	C55	2352402.306	447001.870	10.45
C18	2352414.304	447138.205	0.03	C37	2352310.970	446992.900	0.04	C56	2352400.424	447005.902	4.12
C19	2352414.270	447138.206	0.80	C38	2352310.469	446992.213	0.04	C57	2352397.468	447015.579	14.25
C20	2352413.515	447138.457	0.80	C39	2352310.469	446992.184	0.04				

S总=地块一+地块二+地块三=88311.12+274.03+6038.09=94623.24 合141.9348亩

界址点坐标表(地块一)				界址点坐标表(地块一)			
点号	X	Y	边长	点号	X	Y	边长
A96	2352874.829	447274.621	15.05	A115	2352866.715	447087.147	6.09
A97	2352885.751	447264.261	0.14	A116	2352862.941	447082.369	1.06
A98	2352885.854	447264.163	13.48	A117	2352862.281	447081.534	3.59
A99	2352895.633	447254.884	38.91	A118	2352865.869	447081.534	5.11
A100	2352924.616	447228.924	36.73	A119	2352870.823	447080.296	0.01
A101	2352949.864	447202.253	8.80	A120	2352870.831	447080.291	0.17
A102	2352958.088	447196.030	4.09	A121	2352870.998	447080.250	0.07
A103	2352958.399	447192.651	1.64	A122	2352875.708	447077.110	5.66
A104	2352958.832	447191.065	1.85	A123	2352882.766	447072.404	8.48
A105	2352958.878	447190.895	1.64	A124	2352886.946	447069.175	5.28
A106	2352959.312	447189.302	0.58	A125	2352887.035	447069.106	0.11
A107	2352959.466	447188.739	1.78	A126	2352887.308	447068.895	3.86
A108	2352959.466	447186.961	2.55	A127	2352890.905	447067.496	2.63
A109	2352959.933	447184.472	4.27	A128	2352893.533	447067.496	4.55
A110	2352957.688	447180.383	10.78	A129	2352898.075	447067.702	9.14
A111	2352951.109	447171.848	37.12	A130	2352906.746	447070.592	6.29
A112	2352925.252	447145.209	46.59	A131	2352912.492	447073.142	12.13
A113	2352892.073	447112.504	22.79	A132	2352923.581	447078.063	0.79
A114	2352875.721	447096.626	13.08	A1	2352924.304	447078.384	13.08
A115	2352866.715	447087.147					

界址点坐标表(地块一)				界址点坐标表(地块一)				界址点坐标表(地块一)				界址点坐标表(地块一)				界址点坐标表(地块一)			
点号	X	Y	边长	点号	X	Y	边长	点号	X	Y	边长	点号	X	Y	边长	点号	X	Y	边长
A58	2352639.805	447176.248	14.31	A77	2352736.782	447293.626	6.70	A1	2352924.304	447078.384	51.14	A20	2353116.062	447155.763	24.87	A39	235284.107	447203.166	2.66
A59	2352648.955	447187.252	23.15	A78	2352743.485	447293.626	5.53	A2	2352974.377	447088.795	34.83	A21	2353096.352	447170.935	473.57	A40	235284.577	447202.342	2.95
A60	2352663.976	447204.847	7.94	A79	2352748.847	447292.285	10.01	A3	2353009.081	447091.770	15.53	A22	2352715.088	447459.607	5.63	A41	235284.419	447201.567	27.61
A61	2352668.911	447211.070	3.07	A80	2352748.853	447292.281	0.17	A4	2353024.450	447089.539	0.09	A23	2352716.460	447459.606	12.83	A42	2352811.057	447194.304	4.34
A62	2352670.199	447213.860	1.73	A81	2352749.022	447292.239	4.99	A5	2353024.536	447089.505	0.09	A24	2352702.642	447459.140	23.87	A43	2352815.244	447193.162	0.18
A63	2352670.413	447215.577	3.19	A82	2352753.043	447289.290	2.69	A6	2353024.624	447089.493	0.09	A25	2352678.790	447459.140	1.18	A44	2352815.419	447193.116	4.34
A64	2352669.340	447218.581	1.92	A83	2352771.274	447270.790	7.46	A7	2353031.321	447086.872	7.19	A26	2352677.790	447458.098	1.00	A45	2352815.597	447189.559	3.91
A65	2352668.682	447219.598	3.13	A84	2352777.177	447266.232	2.69	A8	2353041.728	447086.872	11.18	A27	2352656.616	447457.392	27.14	A46	2352815.597	447189.559	4.11
A66	2352668.980	447220.228	1.92	A85	2352779.529	447264.924	2.69	A9	2353044.861	447086.876	3.68	A28	2352650.666	447457.447	0.06	A47	2352815.597	447189.559	4.11
A67	2352668.122	447223.945	2.16	A86	2352781.556	447264.671	2.04	A10	2353094.925	447086.876	51.78	A29	2352650.490	447457.441	0.18	A48	2352820.044	447171.418	10.93
A68	2352665.907	447226.091	2.69	A87	2352783.432	447265.207	1.95	A11	2353114.247	447082.553	19.98	A30	2352651.098	447459.084	49.08	A49	2352821.289	447168.572	3.11
A69	2352667.194	447228.451	14.03	A88	2352786.382	447268.156	4.17	A12	2353119.660	447074.669	13.27	A31	2352622.960	447438.865	128.45	A50	2352821.289	447167.440	1.13
B4	2352485.687	447242.643	9.81	A89	2352782.575	447304.886	51.57	A13	2353125.772	447085.045	12.04	A32	2352616.304	447429.349	128.45	A51	2352821.289	447167.225	0.21
B5	2352479.583	447230.152	2.29	A90	2352820.748	447314.111	12.32	A14	2353129.811	447091.902	7.96	A33	2352625.672	447324.098	10.29	A52	2352821.289	447166.260	0.97
B6	2352497.370	447230.755	18.46	A91	2352830.886	447314.022	0.16	A15	2353130.844	447108.606	20.02	A34	2352636.772	447315.665	30.08	A53	2352821.289	447165.931	1.28
B7	2352537.628	447214.323	0.04	A92	2352830.923	447314.064	0.06	A16	2353151.511	447125.529	20.00	A35	2352659.527	447291.014	16.48	A54	2352816.656	447162.956	2.95
B8	2352537.594	447214.323	7.22	A93	2352833.277	447312.551	2.80	A17	2353151.838	447126.032	0.00	A36	2352644.829	447279.868	21.30	A55	2352825.630	447155.019	10.57
B9	2352523.244	447191.127	8.50	A94	2352833.399	447312.472	7.19	A18	2353151.851	447126.032	0.03	A37	2352544.829	447279.868	50.10	A56	2352827.282	447159.356	8.87
B10	2352523.244	447191.127	6.10	A95	2352839.445	447308.582	49.04	A19	2353127.658	447146.837	31.89	A38	2352659.552	447236.311	36.20	A57	2352832.003	447166.866	8.87
B11	2352517.834	447211.047		A96	2352874.829	447274.621		A20	2353116.062	447155.763	14.63	A39	235284.107	447203.166	14.20	A58	2352839.805	447176.248	14.20

湛江市不动产权籍调查院

2019年3月数字化制图。  
2000国家大地坐标系  
1985国家高程基准，等高距为0.5米  
GB/T 20257.1-2007标准式。

1:1000

测量员：周金学  
绘图员：杨杰斯  
检查员：蔡其森